



TERRAZA MODERNA
ELEGANT INDOOR / OUTDOOR LIVING

SIX MODERN HOMES

IN THE OLD FORT LOWELL AREA
TUCSON, ARIZONA



Thank you for inquiring about Terraza Moderna, designed by Rob Paulus Architects, built by Helios Group, LLC in Tucson, Arizona.



TERRAZA MODERNA
ELEGANT INDOOR / OUTDOOR LIVING

DESIGN: ROB PAULUS ARCHITECTS

BUILD: HELIOS GROUP, LLC



Renderings depicted herein are representational only. Developer reserves the right to make additions, deletions, alterations or amendments as and when it deems fit and proper, without prior notice. Options and upgrades are available at an additional buyer's expense. Buyer is responsible for any additional options and upgrades including any interior design fees.



Located in the celebrated and prestigious Old Fort Lowell Area, Terraza Moderna combines the best of traditional and modern with six new premier homes. These contemporary gems, designed by the award winning firm of Rob Paulus Architects, place an emphasis on indoor / outdoor living with a large, central canopy that extends the great room concept to the outdoors.

Each purchaser will have the opportunity to work directly with the architecture team to further customize the interior design and landscaping of their new home.

Contact Realtor:

Marta Harvey



Russ
Lyon

Sotheby's
INTERNATIONAL REALTY

520.906.0367

marta.harvey@russlyon.com

www.TerrazaModerna.com



TERRAZA MODERNA
ELEGANT INDOOR / OUTDOOR LIVING

DESIGN: ROB PAULUS ARCHITECTS

BUILD: HELIOS GROUP, LLC



Renderings depicted herein are representational only. Developer reserves the right to make additions, deletions, alterations or amendments as and when it deems fit and proper, without prior notice. Options and upgrades are available at an additional buyer's expense. Buyer is responsible for any additional options and upgrades including any interior design fees.



Interiors feature an inviting open living concept complete with large kitchen island for entertaining and naturally lit space with generous views and access to the shaded courtyard. Materiality is functional and gratifying with quality cabinetry, quartz countertops, polished concrete floors, and solar options. Some models provide an accessory unit, perfect for guests, family, or a home-office.



The Terraza Moderna homes blend modern design and smart construction, with a fabulous location. A gated community that emphasizes elegant living. Each home features a spacious and shaded courtyard to reinforce outdoor living with the stunning Sonoran Desert climate and views. Desert landscaping will pull from the mesquite, palo-verde, cacti and creosote of the existing surrounding landscape and incorporate this into the project and individual homes.



Renderings depicted herein are representational only. Developer reserves the right to make additions, deletions, alterations or amendments as and when it deems fit and proper, without prior notice. Options and upgrades are available at an additional buyer's expense. Buyer is responsible for any additional options and upgrades including any interior design fees.

THE MÁLAGA

FLOOR PLAN

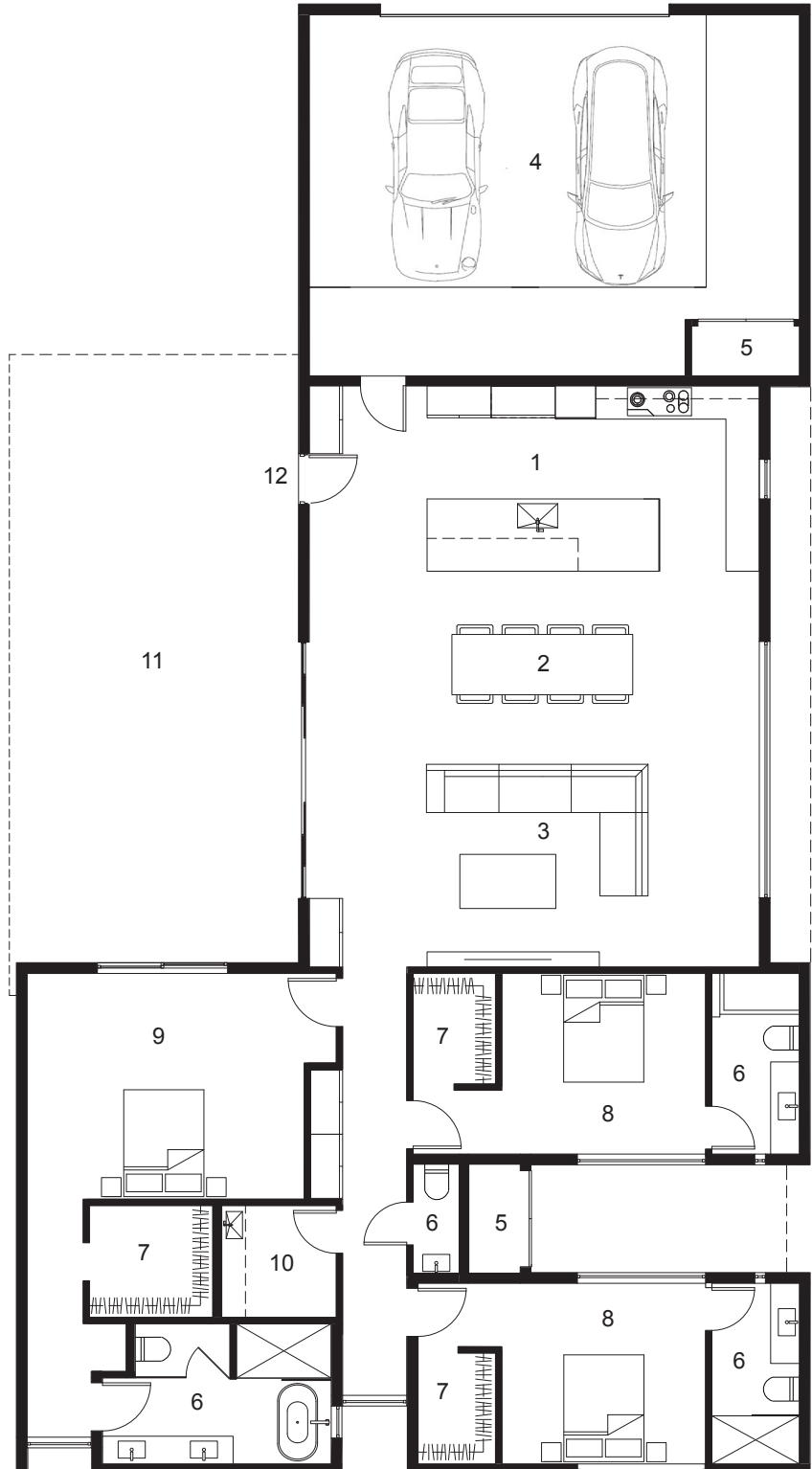
3 bedrooms | 3-1/2 Baths



2808 N Bella Terraza Ct
Tucson AZ 85712

2,485 Livable Sq Ft
(+765 garage / mechanical Sq Ft)

1. KITCHEN
2. DINING
3. LIVING
4. GARAGE
5. UTILITIES
6. BATHROOM
7. CLOSET
8. BEDROOM
9. MASTER BEDROOM
10. LAUNDRY
11. CANOPY
12. ENTRANCE



Renderings depicted herein are representational only. Developer reserves the right to make additions, deletions, alterations or amendments as and when it deems fit and proper, without prior notice. Options and upgrades are available at an additional buyer's expense. Buyer is responsible for any additional options and upgrades including any interior design fees.



THE SEVILLE

FLOOR PLAN

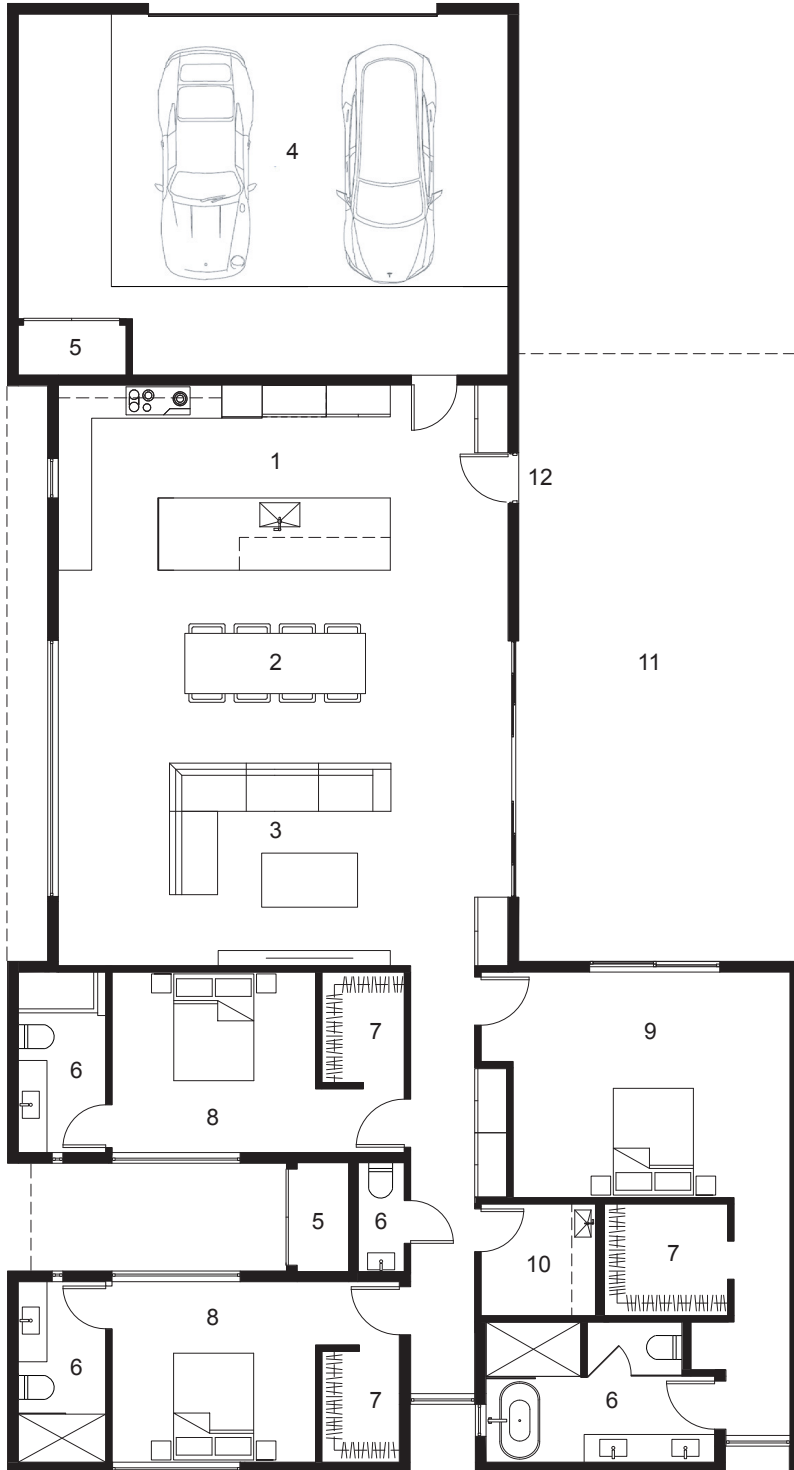
3 bedrooms | 3-1/2 Baths

2805 N Bella Terraza Ct

Tucson AZ 85712

2,645 Livable Sq Ft

(+765 garage / mechanical Sq Ft)



1. KITCHEN
2. DINING
3. LIVING
4. GARAGE
5. UTILITIES
6. BATHROOM
7. CLOSET
8. BEDROOM
9. MASTER BEDROOM
10. LAUNDRY
11. CANOPY
12. ENTRANCE



Renderings depicted herein are representational only. Developer reserves the right to make additions, deletions, alterations or amendments as and when it deems fit and proper, without prior notice. Options and upgrades are available at an additional buyer's expense. Buyer is responsible for any additional options and upgrades including any interior design fees.



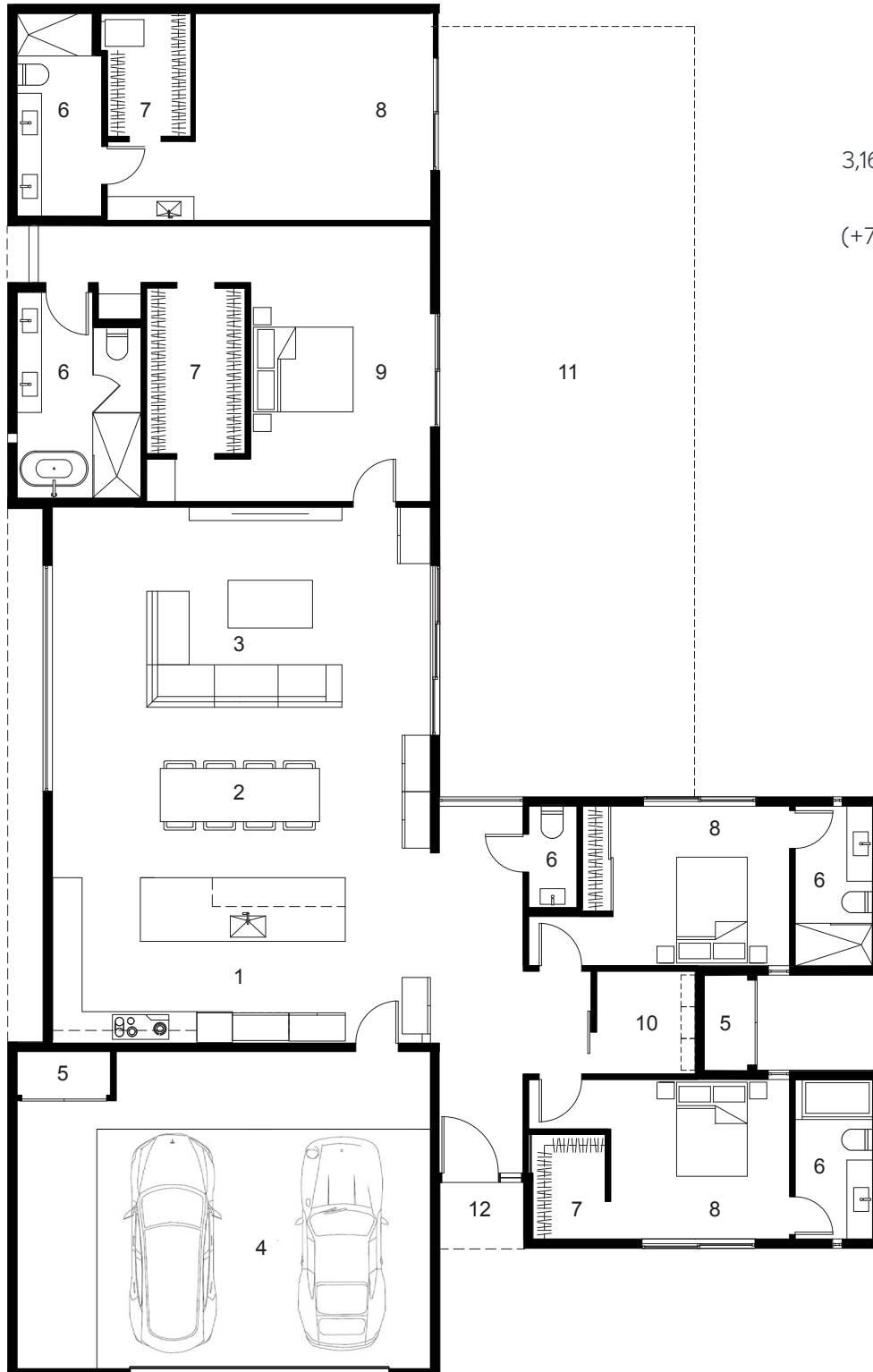
THE MADRID

FLOOR PLAN

4 bedrooms | 4-1/2 baths
(Inclusive accessory dwelling unit)

2811 N Bella Terraza Ct
Tucson AZ 85712

3,160 Livable Sq Ft (including 500
Sq Ft auxiliary dwelling unit)
(+727 garage / mechanical Sq Ft)



1. KITCHEN
2. DINING
3. LIVING
4. GARAGE
5. UTILITIES
6. BATHROOM
7. CLOSET
8. BEDROOM
9. MASTER BEDROOM
10. LAUNDRY
11. CANOPY
12. ENTRANCE



Renderings depicted herein are representational only. Developer reserves the right to make additions, deletions, alterations or amendments as and when it deems fit and proper, without prior notice. Options and upgrades are available at an additional buyer's expense. Buyer is responsible for any additional options and upgrades including any interior design fees.



THE VALENCIA

FLOOR PLAN

4 bedrooms | 4-1/2 baths

(Inclusive accessory dwelling unit)

2814 N Bella Terraza Ct

Tucson AZ 85712

3,000 Livable Sq Ft (including 500

Sq Ft auxiliary dwelling unit)

(+765 garage / mechanical Sq Ft)



1. KITCHEN
2. DINING
3. LIVING
4. GARAGE
5. UTILITIES
6. BATHROOM
7. CLOSET
8. BEDROOM
9. MASTER BEDROOM
10. LAUNDRY
11. CANOPY
12. ENTRANCE



Renderings depicted herein are representational only. Developer reserves the right to make additions, deletions, alterations or amendments as and when it deems fit and proper, without prior notice. Options and upgrades are available at an additional buyer's expense. Buyer is responsible for any additional options and upgrades including any interior design fees.



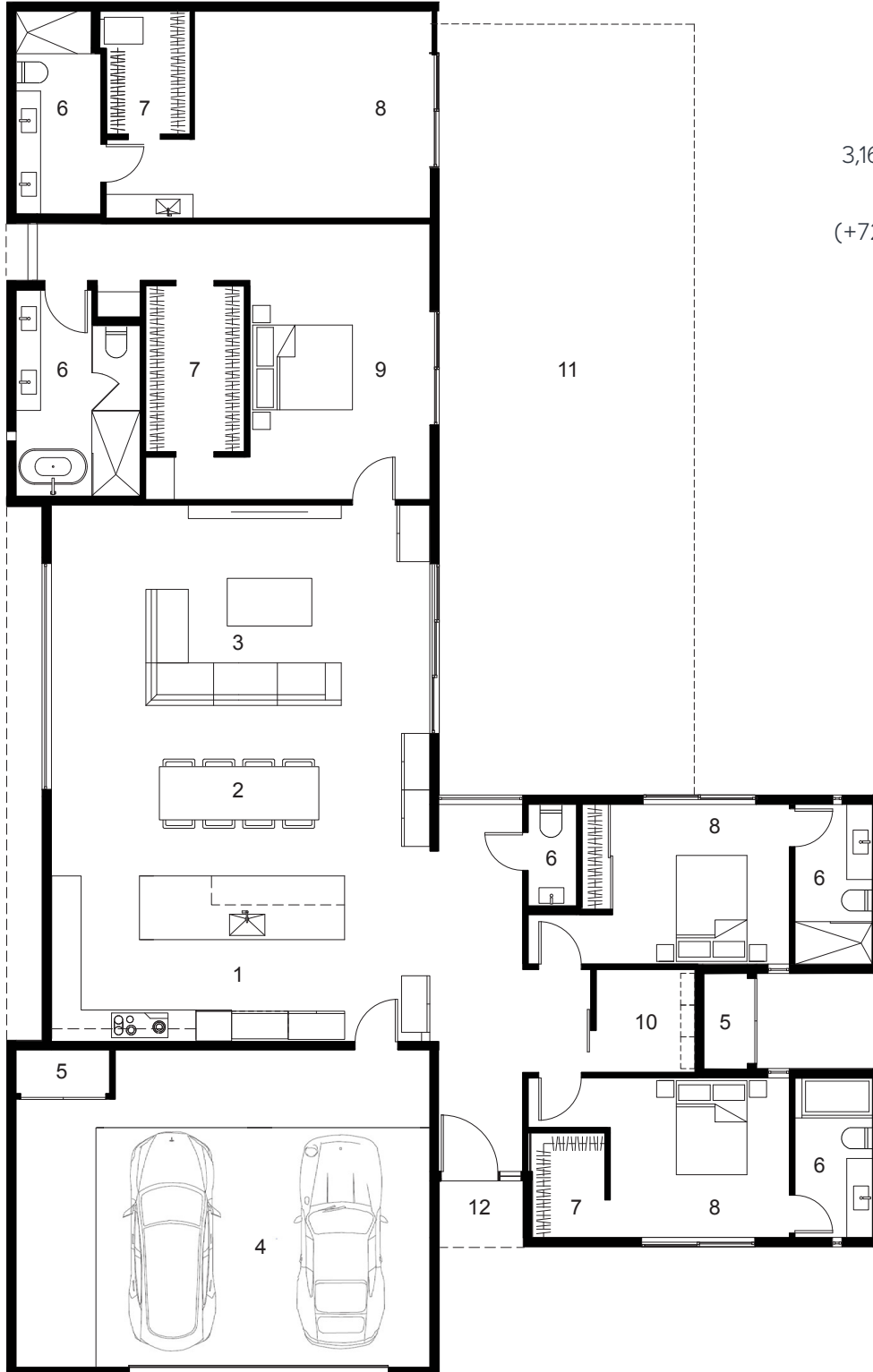
THE ZARAGOZA

FLOOR PLAN

4 bedrooms | 4-1/2 baths
(Inclusive accessory dwelling unit)

2817 N Bella Terraza Ct
Tucson AZ 85712

3,160 Livable Sq Ft (including 500
Sq Ft auxiliary dwelling unit)
(+727 garage / mechanical Sq Ft)



1. KITCHEN
2. DINING
3. LIVING
4. GARAGE
5. UTILITIES
6. BATHROOM
7. CLOSET
8. BEDROOM
9. MASTER BEDROOM
10. LAUNDRY
11. CANOPY
12. ENTRANCE



Renderings depicted herein are representational only. Developer reserves the right to make additions, deletions, alterations or amendments as and when it deems fit and proper, without prior notice. Options and upgrades are available at an additional buyer's expense. Buyer is responsible for any additional options and upgrades including any interior design fees.



THE BARCELONA

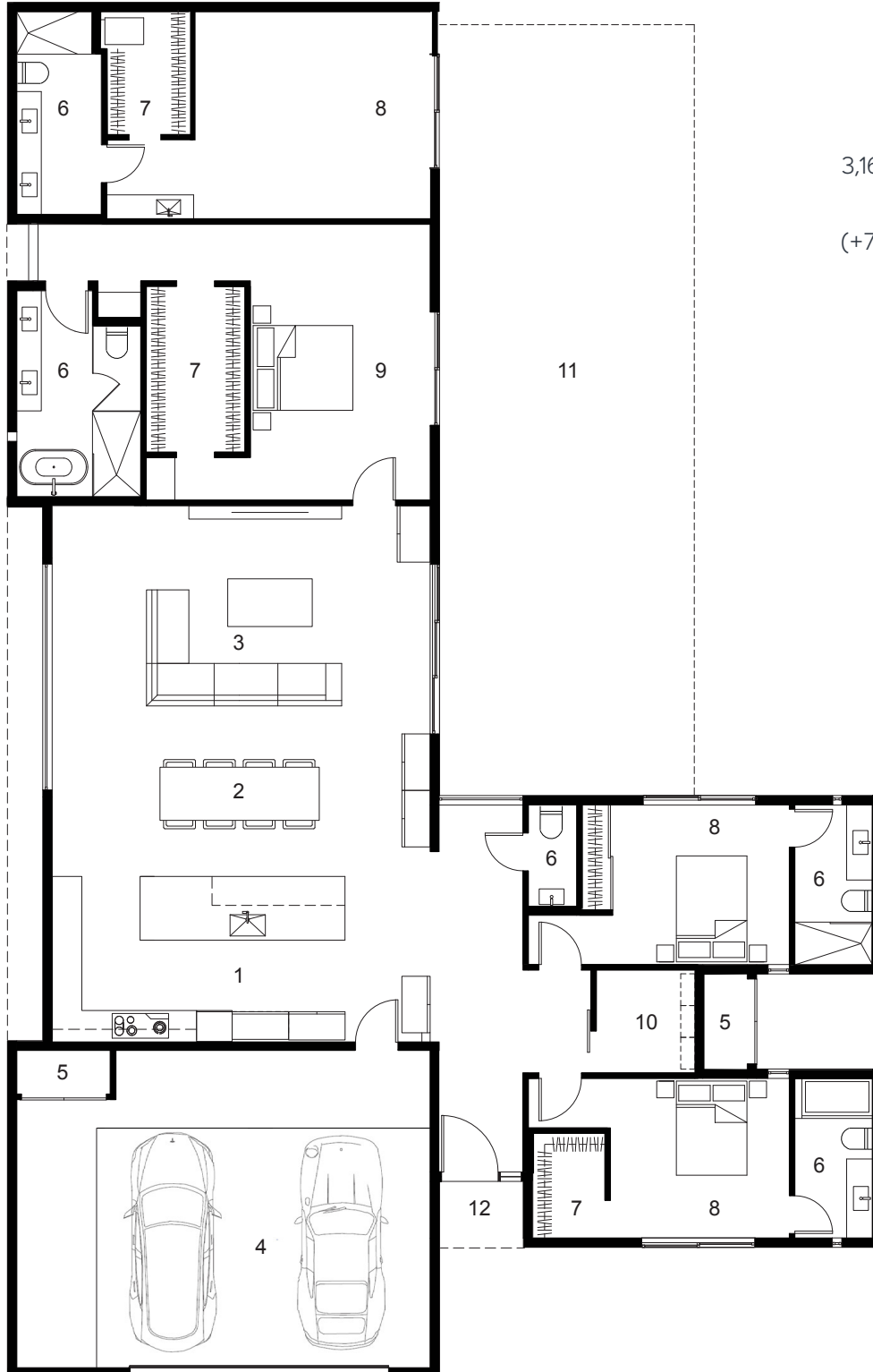
FLOOR PLAN

4 bedrooms | 4-1/2 baths

(Inclusive accessory dwelling unit)

2823 N Bella Terraza Ct
Tucson AZ 85712

3,160 Livable Sq Ft (including 500
Sq Ft auxiliary dwelling unit)
(+727 garage / mechanical Sq Ft)



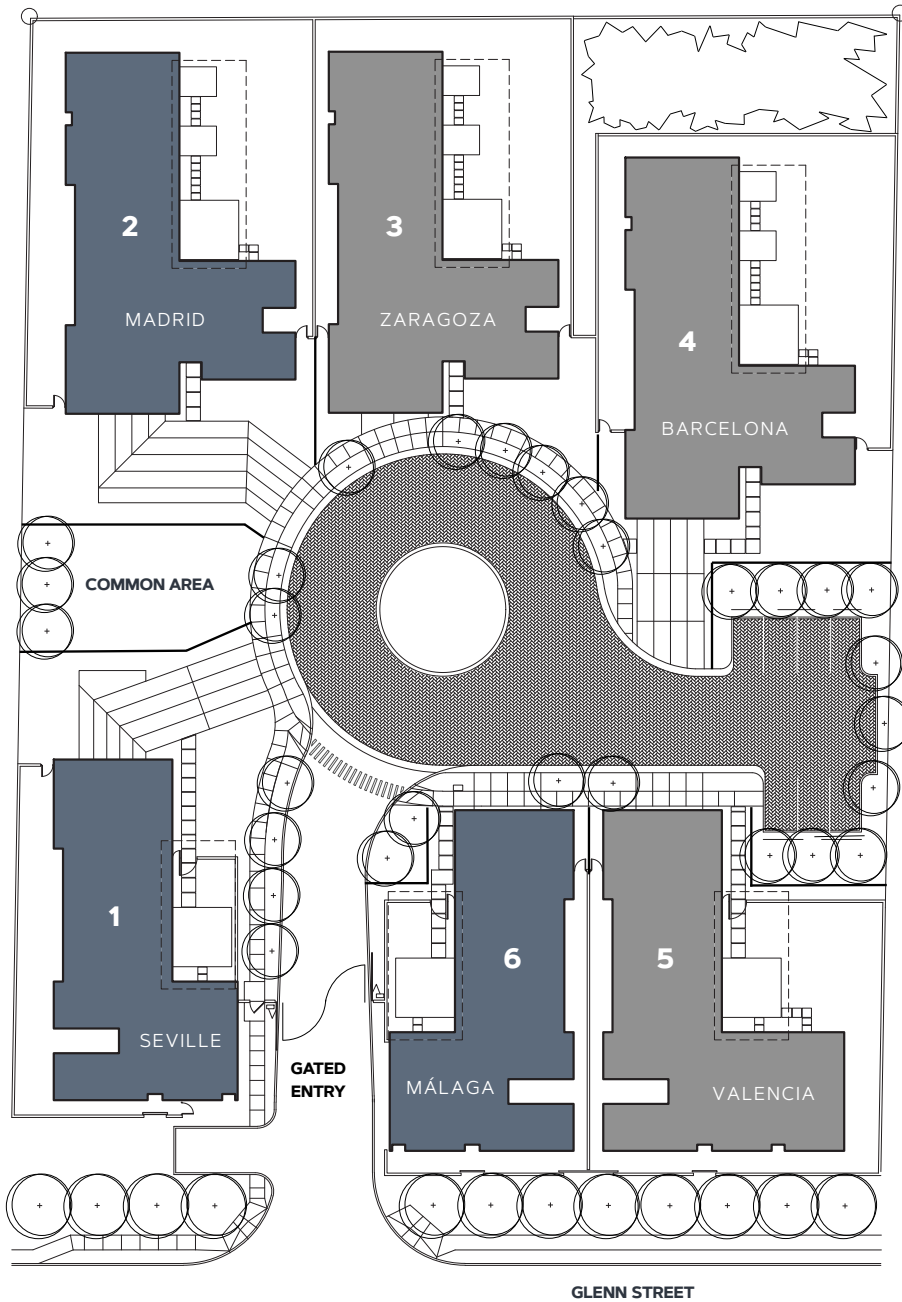
1. KITCHEN
2. DINING
3. LIVING
4. GARAGE
5. UTILITIES
6. BATHROOM
7. CLOSET
8. BEDROOM
9. MASTER BEDROOM
10. LAUNDRY
11. CANOPY
12. ENTRANCE



Renderings depicted herein are representational only. Developer reserves the right to make additions, deletions, alterations or amendments as and when it deems fit and proper, without prior notice. Options and upgrades are available at an additional buyer's expense. Buyer is responsible for any additional options and upgrades including any interior design fees.



SITE PLAN



PHASE 1 AVAILABLE

COMING SOON

LOT ADDRESSES

- LOT 1: 2805 N Bella Terraza Ct Tucson, AZ 85712 (Lot Size: 8,069 SF)
- LOT 2: 2811 N Bella Terraza Ct Tucson AZ, 85712 (Lot Size: 10,664 SF)
- LOT 3: 2817 N Bella Terraza Ct Tucson, AZ, 85712 (Lot Size: 7,842 SF)
- LOT 4: 2823 N Bella Terraza Ct Tucson, AZ, 85712 (Lot Size: 9,861 SF)
- LOT 5: 2814 N Bella Terraza Ct Tucson, AZ, 85712 (Lot Size: 7,386 SF)
- LOT 6: 2808 N Bella Terraza Ct Tucson, AZ, 85712 (Lot Size: 5,369 SF)



Renderings depicted herein are representational only. Developer reserves the right to make additions, deletions, alterations or amendments as and when it deems fit and proper, without prior notice. Options and upgrades are available at an additional buyer's expense. Buyer is responsible for any additional options and upgrades including any interior design fees.

LOCAL COMMUNITY

The project is surrounded by easy access to natural beauty, with trails and parks nearby along with incredible vistas to the Catalina Mountains. Terraza Moderna's central location puts you minutes from shopping, theaters, medical care and restaurants.

TO-DO NEARBY

- 0.7 miles - Crossroads Festival Shopping Center
- 0.7 miles - Roadhouse Cinemas
- 0.7 miles - Historic San Pedro Chapel
- 0.8 miles - Diana Madaras Gallery
- 1.1 miles - Mini Time Machine Museum of Miniatures
- 6.7 miles - La Encantada Shopping Center

RESTAURANTS

- 0.6 miles - Vero Amore
- 0.6 miles - Trident Grill II
- 0.6 miles - Le Buzz Caffè
- 0.6 miles - La Placita Café
- 0.6 miles - Savaya Coffee Market
- 1.0 mile - Indian Twist

GROCERY

- 0.8 miles - Fry's Food and Drug
- 1.1 mile - Trader Joe's Crossroads
- 1.9 miles - Whole Foods

HEALTH/FITNESS

- 1.2 miles - Psychosomatic Transformation Center
- 1.4 miles - Chuze Fitness
- 1.8 miles - Orangetheory Fitness

COUNTRY CLUBS

- 3.9 miles - Tucson Country Club
(Golf, Tennis, Aquatics, Fitness, Dining, Events)
- 5.6 miles - La Paloma Country Club
(Racquet Sports, Aquatics, Kids Club, Spa & Salon, Swim Team)

OUTDOOR/NATURE

- The Loop
- Walking Trails Nearby
- 0.7 miles - Fort Lowell Park
(Sports fields, Aquatics, Tennis, Playgrounds, Historic Buildings. Fort Lowell Park is listed by Tucson Audubon Society)
- 0.7 miles - San Pedro Chapel
- 0.7 miles - Fort Lowell Pool
- 2.1 miles - Tucson Botanical Gardens

MEDICAL/EMERGENCY

- 0.5 miles - Tucson Medical Center
- 0.9 miles - Walgreens



Renderings depicted herein are representational only. Developer reserves the right to make additions, deletions, alterations or amendments as and when it deems fit and proper, without prior notice. Options and upgrades are available at an additional buyer's expense. Buyer is responsible for any additional options and upgrades including any interior design fees.



These exquisite and unique homes are limited to six buyers. This is a rare opportunity to live in a new and modern architectural creation while enjoying all the best of the Old Fort Lowell area.

Contact Realtor:

Marta Harvey



Russ Lyon | **Sotheby's**
INTERNATIONAL REALTY

520.906.0367

marta.harvey@russlyon.com

www.TerrazaModerna.com



TERRAZA MODERNA
ELEGANT INDOOR / OUTDOOR LIVING

DESIGN: ROB PAULUS ARCHITECTS

BUILD: HELIOS GROUP, LLC



Renderings depicted herein are representational only. Developer reserves the right to make additions, deletions, alterations or amendments as and when it deems fit and proper, without prior notice. Options and upgrades are available at an additional buyer's expense. Buyer is responsible for any additional options and upgrades including any interior design fees.